



Horizon 2020 Policy Support Facility 'PSF'

Preparatory Workshop PSF on Bioeconomy

Marta Truco Calbet

Team Leader of the H2020 Policy Support Facility
Unit A4 'Reforms and economic impact- country intelligence'

13 March 2019

DG Research & Innovation
European Commission

Research and
Innovation



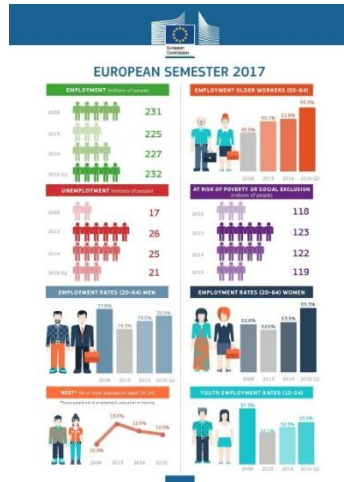
European Commission

Influencing national R&I policies with better evidence

Economic analysis

European Semester

Horizon 2020 Policy Support Facility



Diagnosis of bottlenecks and assessment of policy responses



Expert and peer support to reforms

PSF origins:

- Launched in 2015, it stems from the Commission Communication of 2014 'Research and Innovation as Sources of Renewed Growth' (COM(2014)339)
- Rooted in previous Commission country-based analyses and policy learning in R&I (e.g. open method of coordination)
- "Spreading excellence and widening participation" and "Europe in a changing world - - inclusive, innovative and reflective societies", Challenge 6" parts of Horizon 2020.

Horizon 2020 Policy Support Facility

- Launched in 2015
- Enables MS and AC to strengthen the quality and efficiency of their R&I system.
- With the objective "to improve the design, implementation and evaluation of R&I policies"
- Supporting evidence-based policy-making
- Drawing on the combination of learnings between peers and high-level experts advice and assistance

How?

Peer Reviews of
National R&I Systems

Specific Support to
Countries

Mutual Learning
Exercises

PSF Knowledge Center



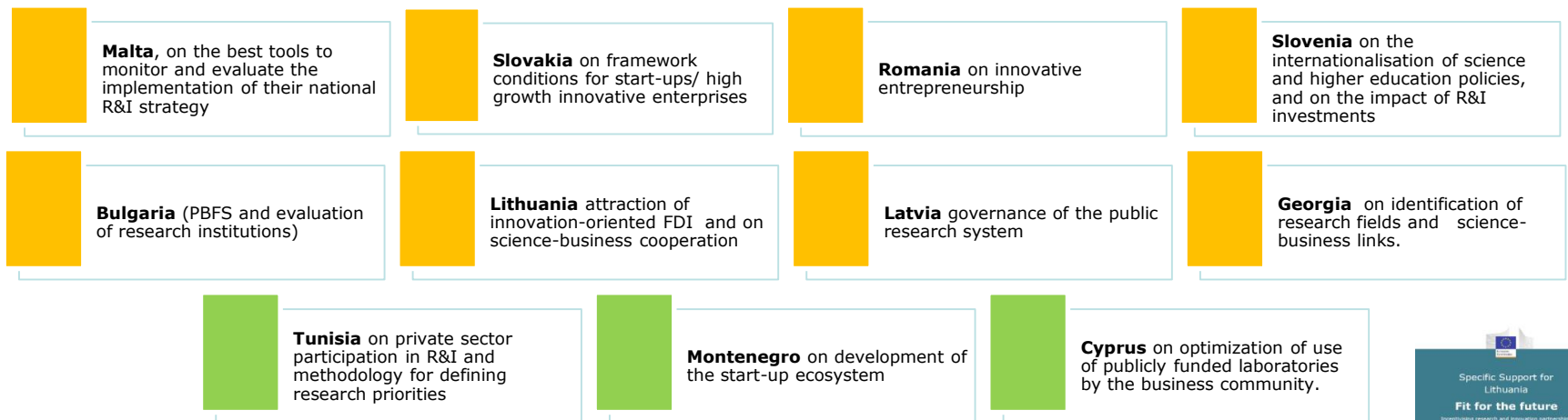
PSF Peer Reviews

In-depth assessments of a country's R&I system carried out by a panel of experts and leading to concrete recommendations to the national authorities on reforms necessary to strengthen their R&I system.



PSF Specific Support to countries

Provides a set of concrete recommendations on how to tackle a specific R&I policy challenge and how to implement the accompanying reforms



PSF Mutual Learning Exercises

Focussed on specific/ operational R&I challenges of interest to several volunteering countries, and draw on a hands-on project-based exchange of good practice.



How does it work?



How does it work?

Mutual Learning Exercises

- Focus on **policy challenge** of interest to several **volunteering** countries.
- It identifies **good practice, lessons learned and success factors**
- With the aim to implement **change** in their specific policy mix.
- **Policy learning** approach: interested MS learn from each other exploring specific questions in more detail.
- With a **modular approach** & combination of activities (workshops, study visits, information sharing activities, etc...)
- High level advice and **assistance** from external experts



How does it work?

Mutual Learning Exercises



- Scoping meeting: identification of priority topics
- Kick off meeting: modus operandi
- 2/3 Country visits supported by background / topic reports
- Final meeting in Brussels: final report
- Dissemination event
- Policy change in MS/AC

How does it work?

Peer Reviews and Specific support to countries

- Focus on a policy change: political commitment and trust!
- Optimal timing in political/ policy cycle
- Tailor-made to specific country needs (country based activities)
- Focus on key R&I policy areas (preparation important!)
- Mix of experts' and peers' skills
- Fully involvement of stakeholders
- Limited set of 'key' actionable recommendations

How does it work?

Peer Reviews and Specific support to countries

- **Preparatory stage:** definition of the scope, engagement of experts and peers
- **Kick-off meeting** with national authorities, EC and panel (common understanding of issues for review). Preparation (background and national documents). Division of work : Experts (drafting the report), Peers (input and case studies)
- **1st country visit:** interviews with all relevant stakeholders i.e. Institutions, academia, business, NGOs...
- Preparation of 1st draft report
- **2nd country visit** for feedback on 1st draft findings and refine analysis with topic-based meetings
- **Report finalisation** and consultations with host country
- **Dissemination event**

Success cases

Peer Reviews:

- Bulgaria (new Bulgarian Science Code), Poland (new Polish 'Law 2.0' on science and higher education), Moldova (new Research Code), Malta (support the creation of a new monitoring system), etc...

MLEs:

- Alignment and Interoperability: a year after (9 countries implemented specific actions, i.e; SI updated the selection procedure for participating in joint programming, based on AT)
- MLE Widening and Synergies: (i.e; HR: a support programme to stakeholders to join partnerships is being introduced, SI: systemic synergies, etc...)



Success factors

Building on successful experiences for R&I reforms

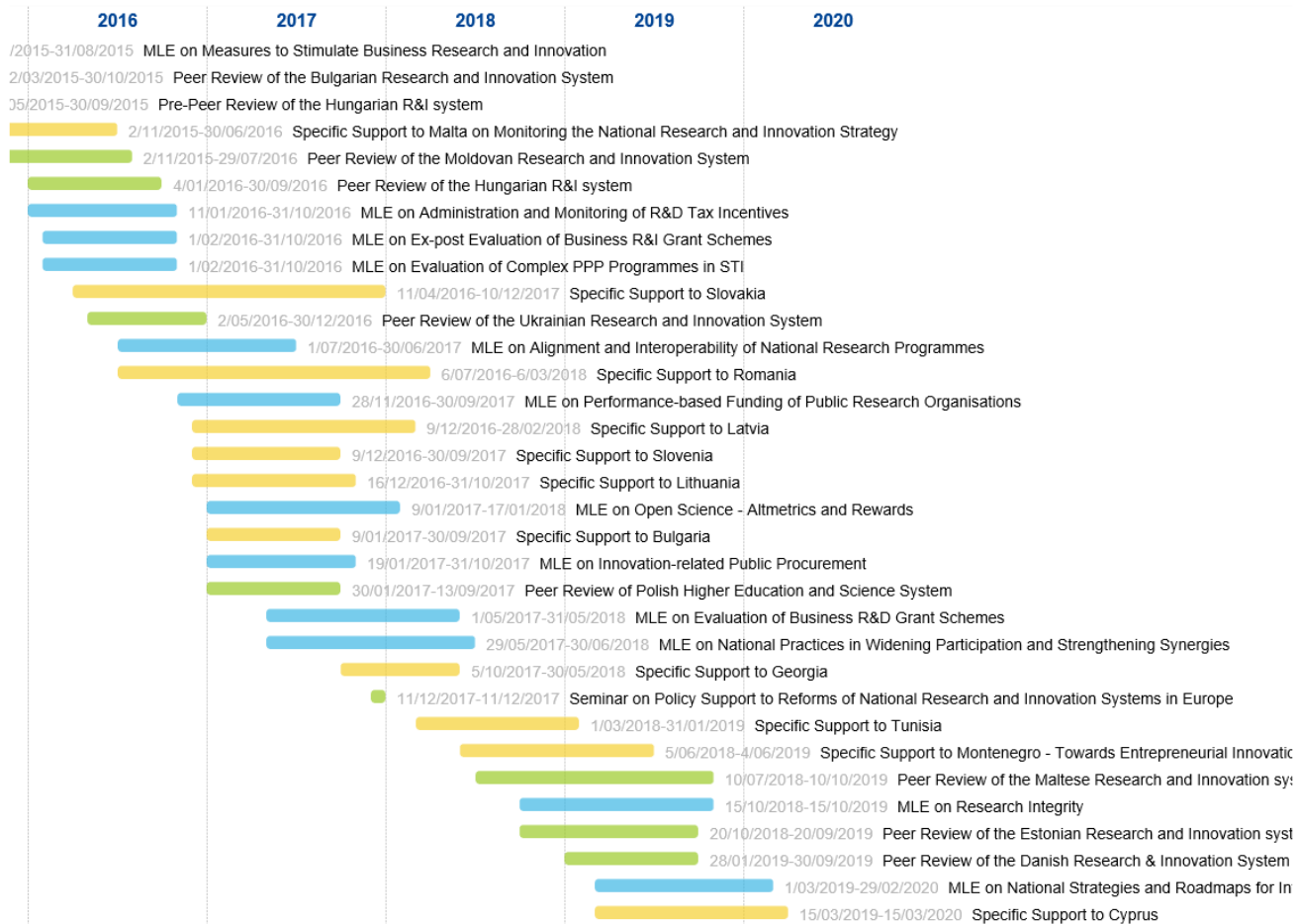
- Political commitment and trust
- Optimal timing in political/ policy cycle
- Focus on key R&I policy areas (preparation important!)
- Mix of experts' and peers' skills
- Full involvement of stakeholders (when possible)
- Limited set of 'key' actionable recommendations



European
Commission

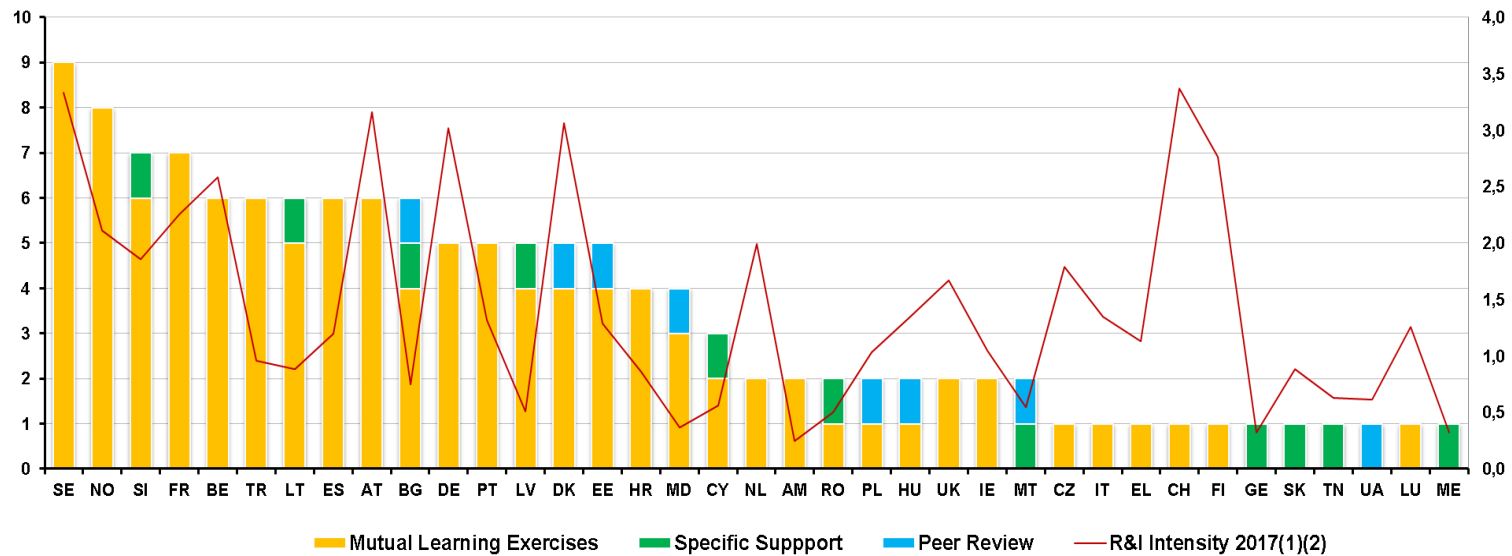
PSF activities

Exercises



PSF participation per country

Participation by country on PSF activities
as of January 2019



All EU Member States have participated in at least one PSF activity so far!

PSF Evaluation EG: Findings

Key strengths:

- Uniqueness
- Bottom up approach
- Demand orientation
- Voluntary nature
- Challenge driven
- Practical focus
- Tailorability
- Low cost to participants

Benefits:

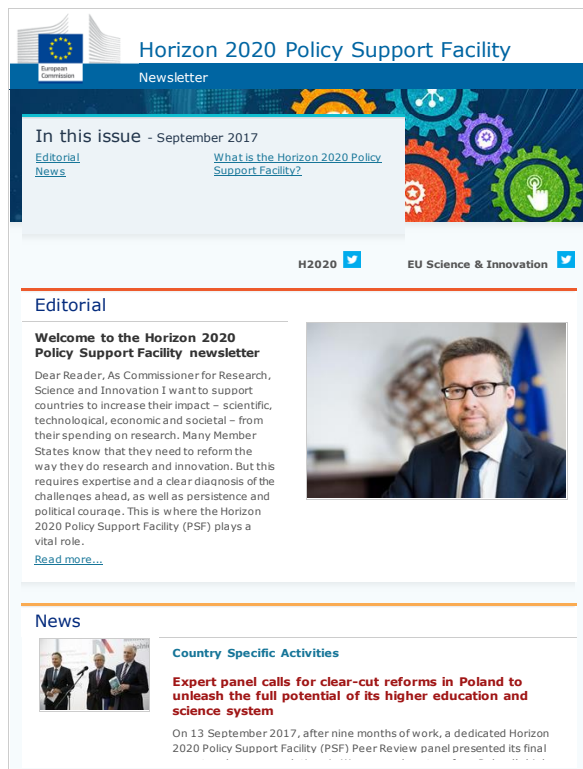
- Raised the political profile of R&I as a driver for growth
- Production of knowledge useful for policy learning
- Raises the level of knowledge and experience among participants
- Intangible benefits: networks, exposing R&I systems to international expertise, EU added value of MS supporting each other's reform agendas

Towards PSF 2,0

- Address R&I challenges and bottlenecks BUT ALSO
- Address how R&I policies can play a more important role in helping countries achieve the sustainable Europe by 2030

Communication of H2020 PSF activities

- **Monthly H2020 PSF Newsletter**



Horizon 2020 Policy Support Facility Newsletter

In this issue - September 2017

[Editorial News](#) [What is the Horizon 2020 Policy Support Facility?](#)

H2020 EU Science & Innovation

Editorial

Welcome to the Horizon 2020 Policy Support Facility newsletter

Dear Reader, As Commissioner for Research, Science and Innovation I want to support countries to increase their impact – scientific, technological, economic and societal – from their spending on research. Many Member States know that they need to reform the way they do research and innovation. But this requires expertise and a clear diagnosis of the challenges ahead, as well as persistence and political courage. This is where the Horizon 2020 Policy Support Facility (PSF) plays a vital role.

[Read more...](#)

News

Country Specific Activities

Expert panel calls for clear-cut reforms in Poland to unleash the full potential of its higher education and science system

On 13 September 2017, after nine months of work, a dedicated Horizon 2020 Policy Support Facility (PSF) Peer Review panel presented its final

> [Subscribe here](#)

- **Fact Sheets of PSF activities**



MAY 2017 > MAY 2018

HORIZON 2020 POLICY SUPPORT FACILITY

EVALUATION OF BUSINESS R&D GRANT SCHEMES

MUTUAL LEARNING EXERCISE

PARTICIPATING COUNTRIES

- Austria
- Croatia
- Germany
- Norway
- Spain
- Turkey
- Belgium
- France
- Lithuania
- Slovenia
- Sweden
- UK

CHAIR

Marzena Weresa
Warsaw School of Economics

RAPORTEUR

Martijn Peul
Technopolis Group

EXPERTS

Paul Cunningham
Manchester Institute of Innovation Research, University of Manchester

Pin den Hertog
Strategic Innovation & Interactive

POLICY MANAGER

Eva Ruesslert
European Commission

PROJECT MANAGER

Nikos Maroulis
Technopolis Group

WEB PAGE

PSF on Science of Business R&D Grant Schemes

OBJECTIVES

The aim is to improve the exchange of information, mutual learning and the identification of good practice among the participating countries in order to put in place better systems for the ex-post evaluation of business R&D grant schemes.

SCOPE

Many countries use R&D grants to stimulate investments into research and innovation (R&I) by private companies, but assessing their effects – whether quantitatively or qualitatively – remains a challenge. Based on the results of the previous Mutual Learning Exercise on this subject, three areas have been identified for further discussions:

- The potential of big data – such as data linking and new sources of data
- Assessing the effect of funding on the behaviour of companies
- Combining qualitative and quantitative evaluation approaches

SCHEDULE

- June 2017 Kick-off meeting in Brussels
- August 2017 1st country visit to Oslo, Norway
Big data: data linking, new data sources and new analytical methods
- November 2017 2nd country visit to Stockholm, Sweden
Capturing behavioural change: towards a better understanding of innovation journeys
- January 2018 3rd country visit to London, United Kingdom
Emerging mixed methods for evaluation
- March 2018 Final working meeting in Brussels
- May 2018 Final workshop

Research and Innovation

Research and Innovation

> For more information visit the [PSF Knowledge Center](#)

... And others:

Summary articles of concluded activities

PSF Brochure

PSF Video

Tweets of kick-off and final meetings

Translation of Executive Summaries



European
Commission

Thank you!

RTD-PSF@ec.europa.eu

