

## Circular bioeconomy = higher value + sustainable use of local resources + collaboration between academia and industry

- Waste streams can become valuable resources
- Cross-sector collaboration drives innovation
- Circular approaches increase resource efficiency

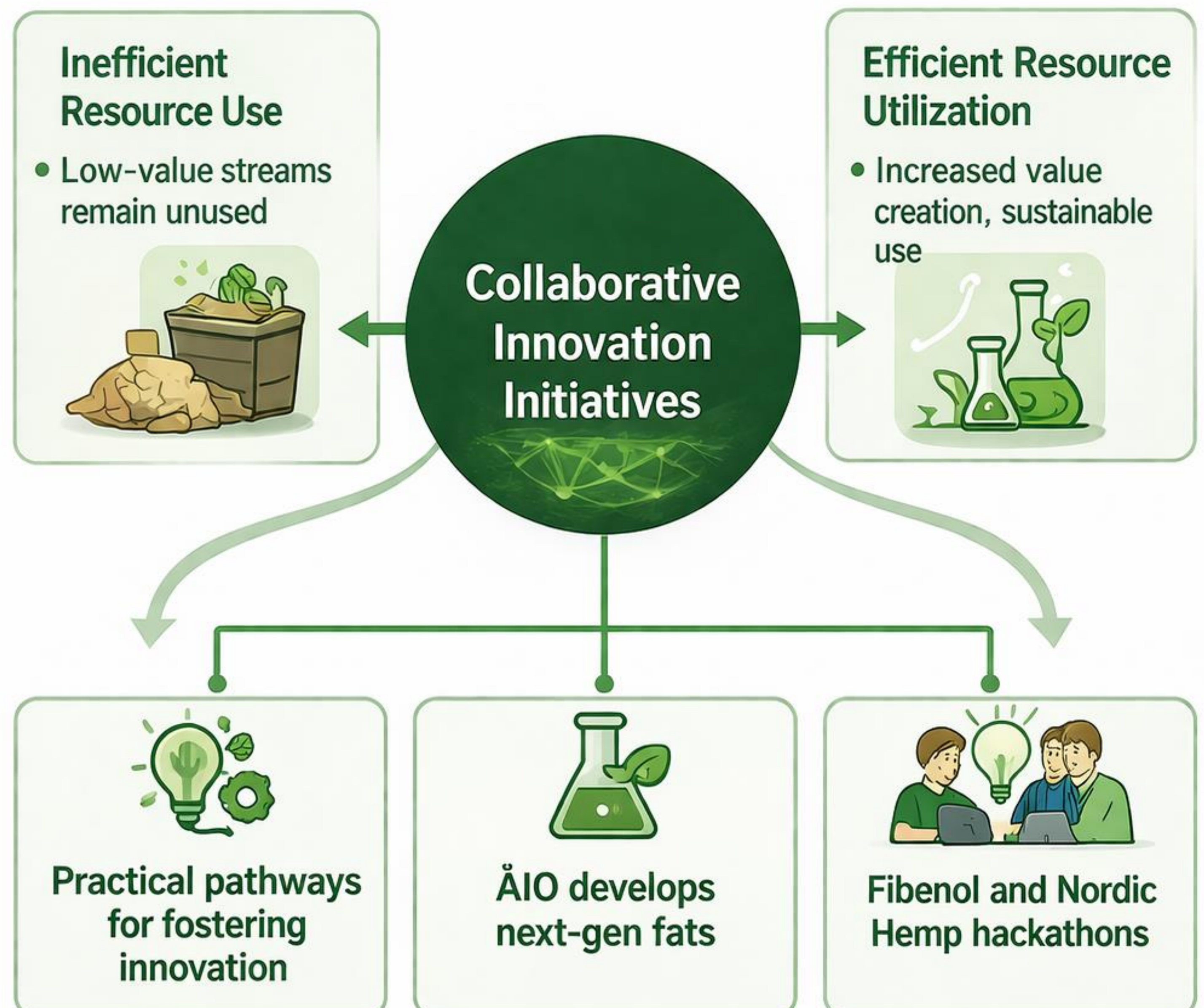
### Key challenges

Different economic structures and productivity levels

Differences in Gross value Added across sectors

Inefficient resource use

## Fostering Innovation in the Bioeconomy



Supported by university mentors, domain experts, and regional innovation networks, these initiatives demonstrate how collaboration between academia and industry can enhance the efficient and sustainable use of local resources, increase value creation, and contribute to the development of a circular bioeconomy.